



# ANSEME SEED FARM

Greenhouse Seed Production



INNOVATION FOR  
HIGH-QUALITY SEED  
—  
ONLY THE BEST  
TECHNOLOGY

**54,000 m<sup>2</sup> of greenhouses divided into 130 units  
measuring either 500 or 250 m<sup>2</sup> each.**

**100 m<sup>2</sup> PHYTOPATHOLOGY LABORATORY**

# ANSEME SEED FARM GREENHOUSE SEED PRODUCTION

In 2013, Anseme Spa management has developed a highly innovative investment plan, *"Anseme Farm – Greenhouse Seed Production"*, aiming at extending the range of multiplication services offered to seed breeding companies.

The main purpose of this 5-year plan (2012-2016) is to create a farm directly run by Anseme Spa agronomic staff, pursuing three main goals:

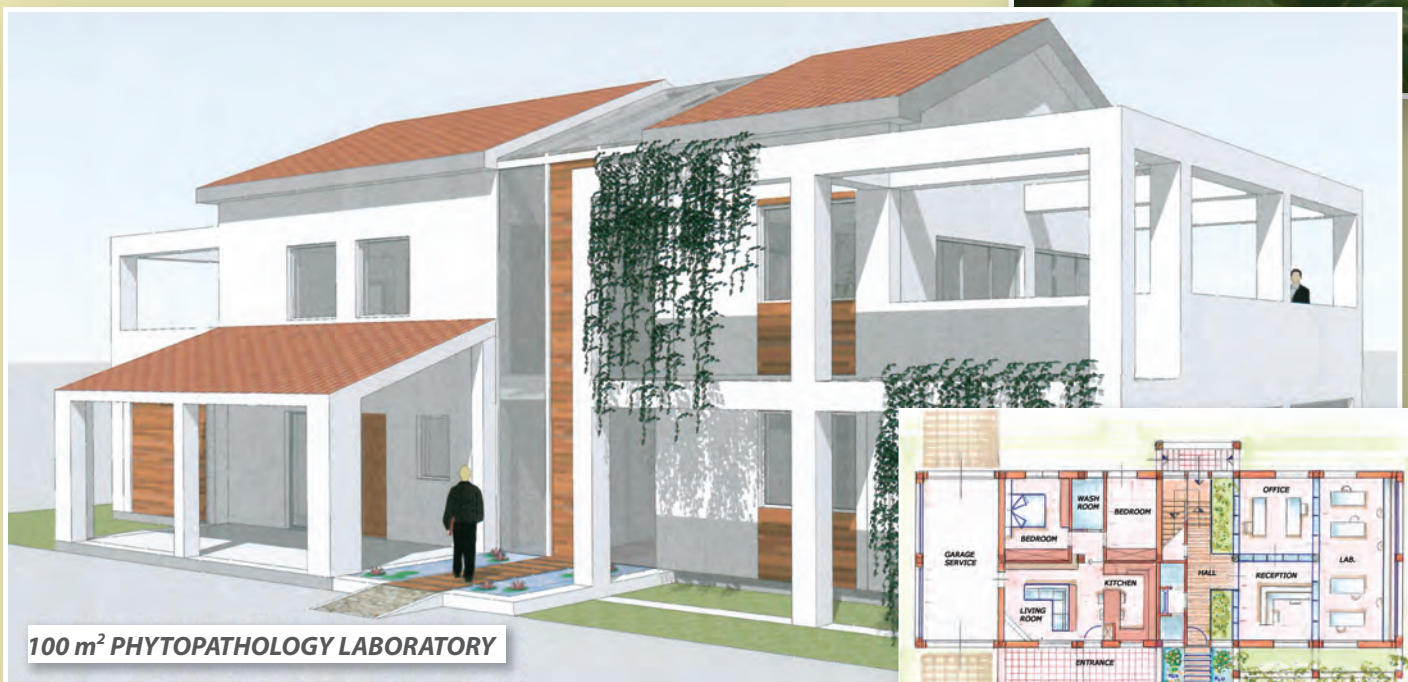
- A) to produce in greenhouse high-quality seed, which we consider Top-Quality and Cleaned seed;
- B) to investigate and test innovative agronomic techniques regarding seed production in open field;
- C) to offer additional services, beside seed production, as nicking trials, bolting trials, production tests, grow-out tests, etc.

The plan will last 5 years; it has started in 2012 with the purchase of a farm in Cesena area, with HA18.00 of cultivable land and the building of the first 12 greenhouses (already in production for the 2013 harvest). At the moment, the covered surface is 6,000 m<sup>2</sup> and the building will be completed in 2016, when the total greenhouse-covered surface will be 54,000 m<sup>2</sup>.

The 2013 stage consists in the construction of 10 more greenhouses in May (now, they are being assembled) measuring 5,000 m<sup>2</sup>, and 12 more next August, for a total surface of 12,000 m<sup>2</sup>. Adding these surfaces to the greenhouses already built, for the 2014 harvest the greenhouse-covered surface will be 18,000 m<sup>2</sup>.

Our investment plan schedules the construction of 12,000 m<sup>2</sup> of greenhouses per year from 2014 to 2016, so that the total covered surface will be 54,000 m<sup>2</sup>, divided into 130 units, measuring either 500 or 250 m<sup>2</sup> each.

The agronomic tests in open field will start in autumn 2013 and an area of 10,000 m<sup>2</sup> will be specifically devoted to them.



100 m<sup>2</sup> PHYTOPATHOLOGY LABORATORY



**CLEAN SEED**

**- BACTERIA**

**- VIRUSES**

**- FUNGI**



***Huge investments in tools and equipment, in order to meet the highest quality requirements of the seed production sector***

***54,000 m<sup>2</sup> of greenhouses & 100 m<sup>2</sup> phytopathology laboratory***

***A whole agronomic team specialized in high-quality seed production***



54,000 m<sup>2</sup> of greenhouses - ANSEME FARM

## FACILITIES

In 2014, a facility will be built, providing offices, a meeting room, a cafeteria service, a tool shed and a 100 m<sup>2</sup> phytopathology laboratory.

This laboratory will test the seed produced by **Anseme Seed Farm** and will back up all Anseme productions in open field. It will be an important technical support for the quality testing of our productions, not only after the seed has been produced, as it already happens now, but also during all phases of the crop production.

A team of agronomists specialized in greenhouse seed production will work for **Anseme Seed Farm**, for the phytopathology laboratory and for the experimental tests in open field. At Anseme Seed Farm we will carry out nicking trials, bolting trials, trial productions, herbicide and fungicide trial tests, grow-out tests and we will experiment innovative agronomic techniques.

In particular, beside greenhouse seed production, experimentation will be one of the main activities of **Anseme Seed Farm**, in order to apply new techniques to the productions in open field. For this reason, we are organizing a research program directed at creating innovation in the field of vegetable seed production.



carrot seed production



# WHAT WE CAN DO WITH GREENHOUSE PRODUCTIONS

1. production of CLEANED SEED, meaning healthy, fungi-, bacteria-, and virus-free seed;
2. seed with high germination rates;
3. stockseed increase;
4. production of varieties which are particularly sensitive to frost or to other factors, making their production in open field more difficult;
5. production of new or niche varieties, for which very small quantities are requested.

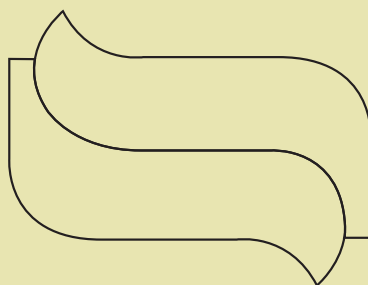
## SPECIES WHICH CAN BE PRODUCED IN GREENHOUSE

- Hyb Cabbage
- Hyb Chinese Cabbage
- Hyb Flowering Cabbage
- Hyb Turnip
- Hyb Broccoli
- Hyb Carrot
- Hyb Onion
- Hyb Bunching Onion
- Hyb Radish
- Hyb Chicory
- Herbs
- Wild Rocket
- Celery
- Fennel
- Basil
- Lettuce

## WE HAVE A TECHNICAL-SCIENTIFIC COLLABORATION WITH THE FOLLOWING UNIVERSITIES:

- University of Bologna
- University of Torino
- University of Ancona





anseme

**ANSEME spa**

via Cipro, 60 - 47521 Cesena (FC) ITALY

Tel. +39.0547382121 - Fax +39.0547384451

e-mail: [anseme@anseme.com](mailto:anseme@anseme.com) - [anseme@anseme.it](mailto:anseme@anseme.it)

<http://www.anseme.com>



Edizioni Barzanti  
Stampato in Italia